

## Merkinės memorialas

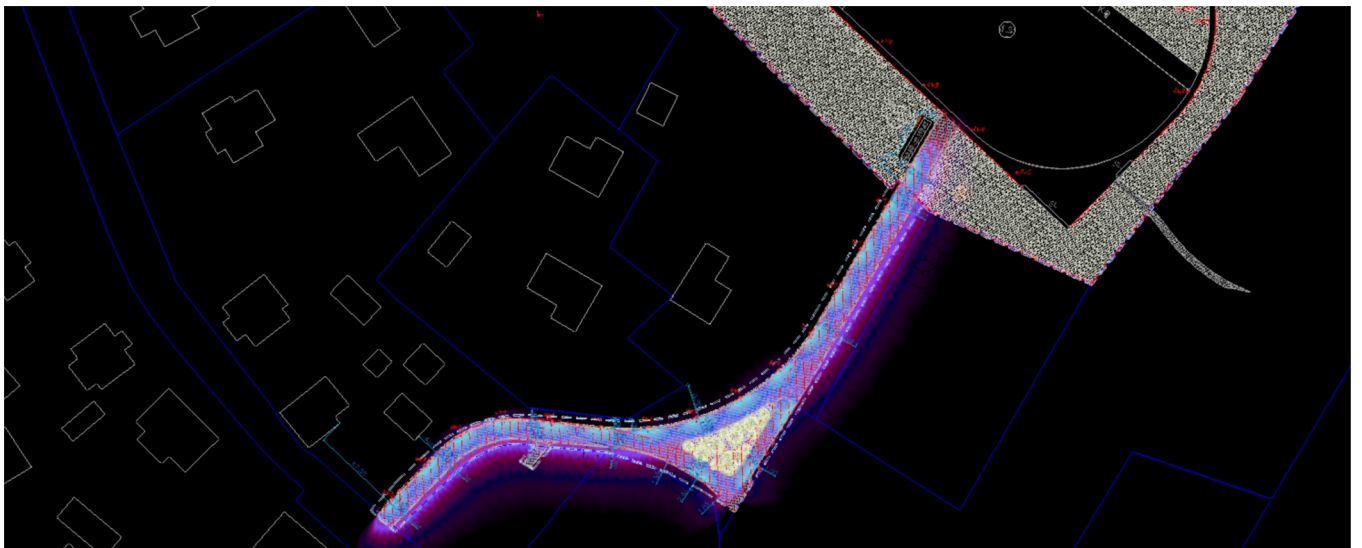
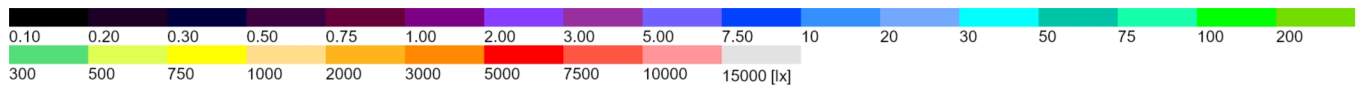
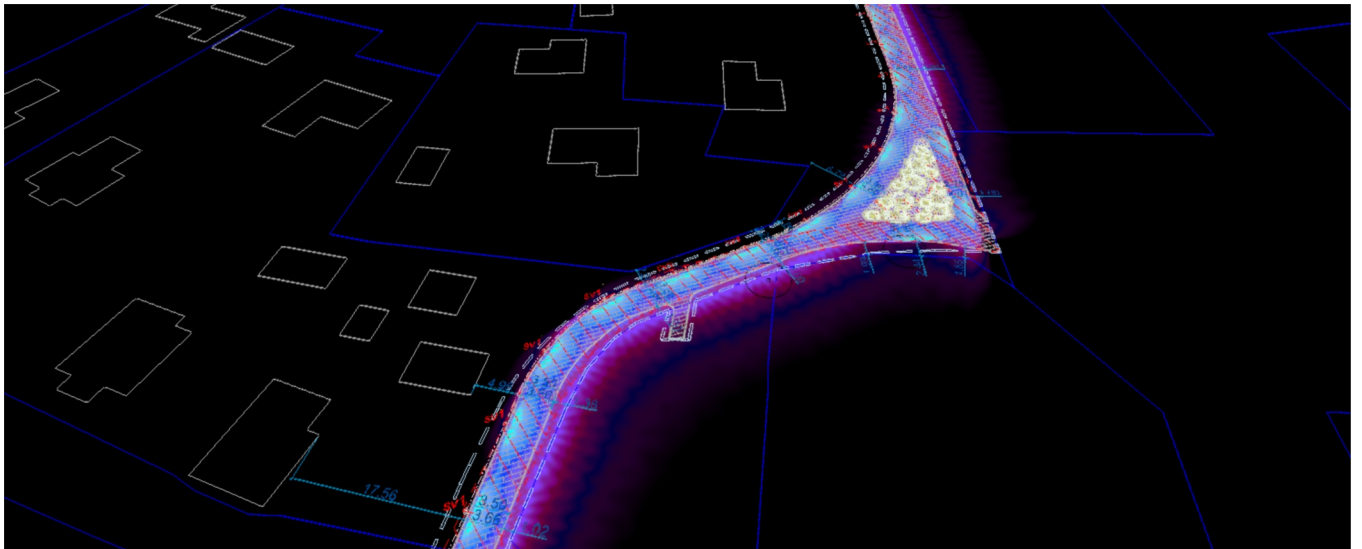
## Table of Contents

Cover .....	1
Table of Contents .....	2
Images .....	3

### Site 1

Luminaire list .....	4
Calculation objects / Light scene 1 .....	5
Takas / Light scene 1 / Perpendicular illuminance .....	7
Takas / Light scene 1 / Perpendicular illuminance .....	8

## Images



Site 1

## Luminaire list

 $\Phi_{total}$ 

11754 lm

 $P_{total}$ 

185.4 W

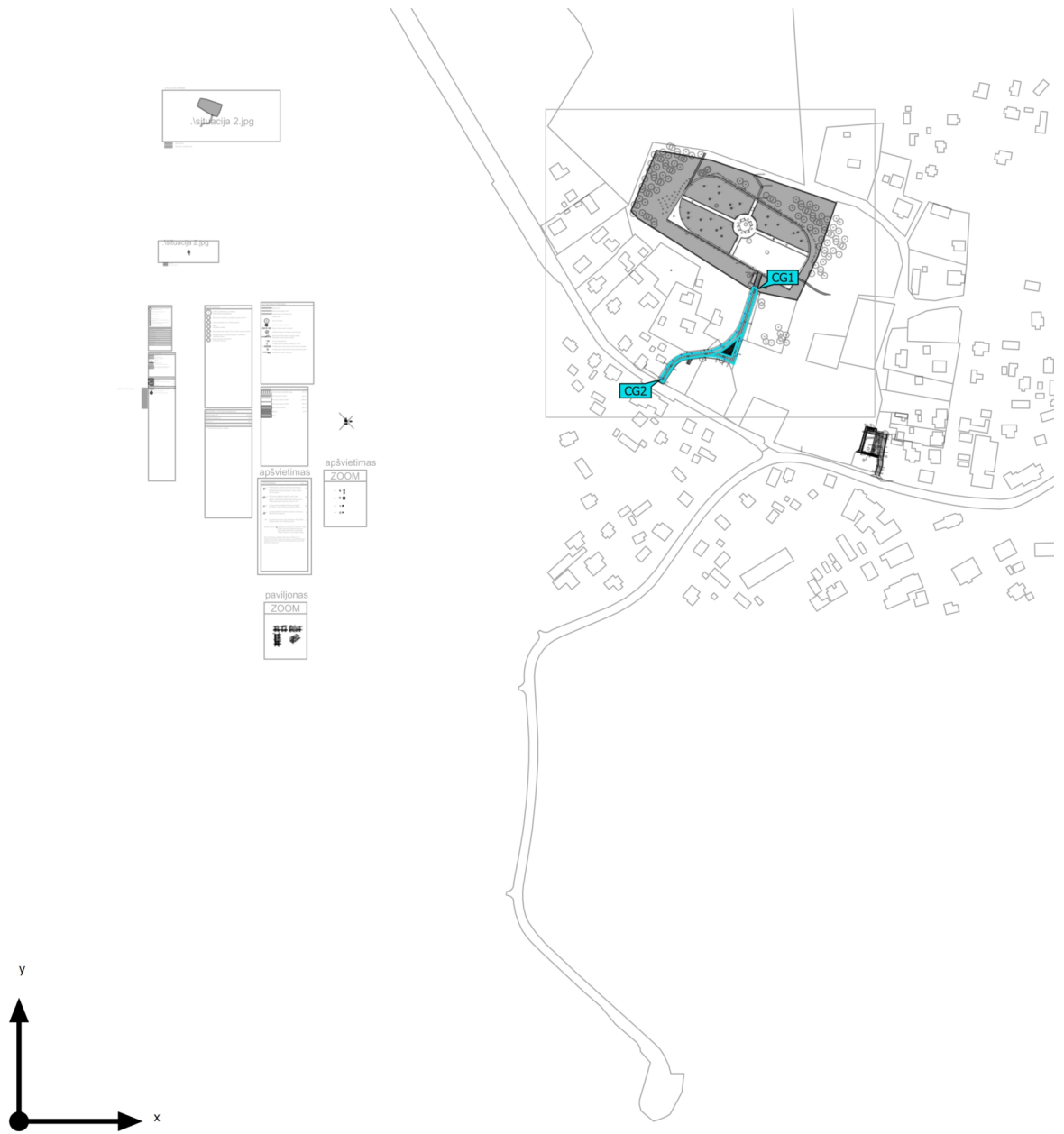
Luminous efficacy

63.4 lm/W

pcs.	Manufacturer	Article No.	Article name	P	$\Phi$	Luminous efficacy
18	Lombardo-Cini&Nils	LL121008	LL121008	10.3 W	653 lm	63.4 lm/W

Site 1 (Light scene 1)

**Calculation objects**



Site 1 (Light scene 1)

## Calculation objects

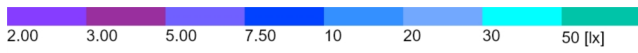
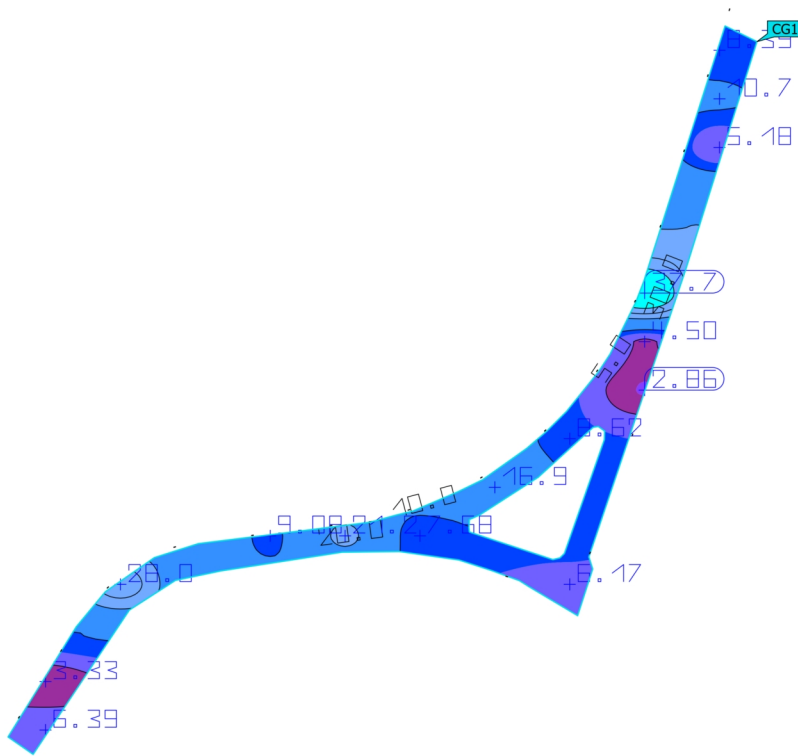
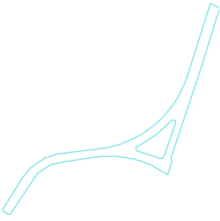
Calculation surfaces

Properties	$\bar{E}$	$E_{min}$	$E_{max}$	$U_o (g_1)$	$g_2$	Index
Takas Perpendicular illuminance Height: 0.000 m	11.8 lx	2.86 lx	37.7 lx	0.24	0.076	CG1
Takas Perpendicular illuminance Height: 0.000 m	12.9 lx	3.33 lx	37.7 lx	0.26	0.088	CG2

Utilisation profile: DIALux presetting (5.1.4 Standard (outdoor transportation area))

Site 1 (Light scene 1)

## Takas

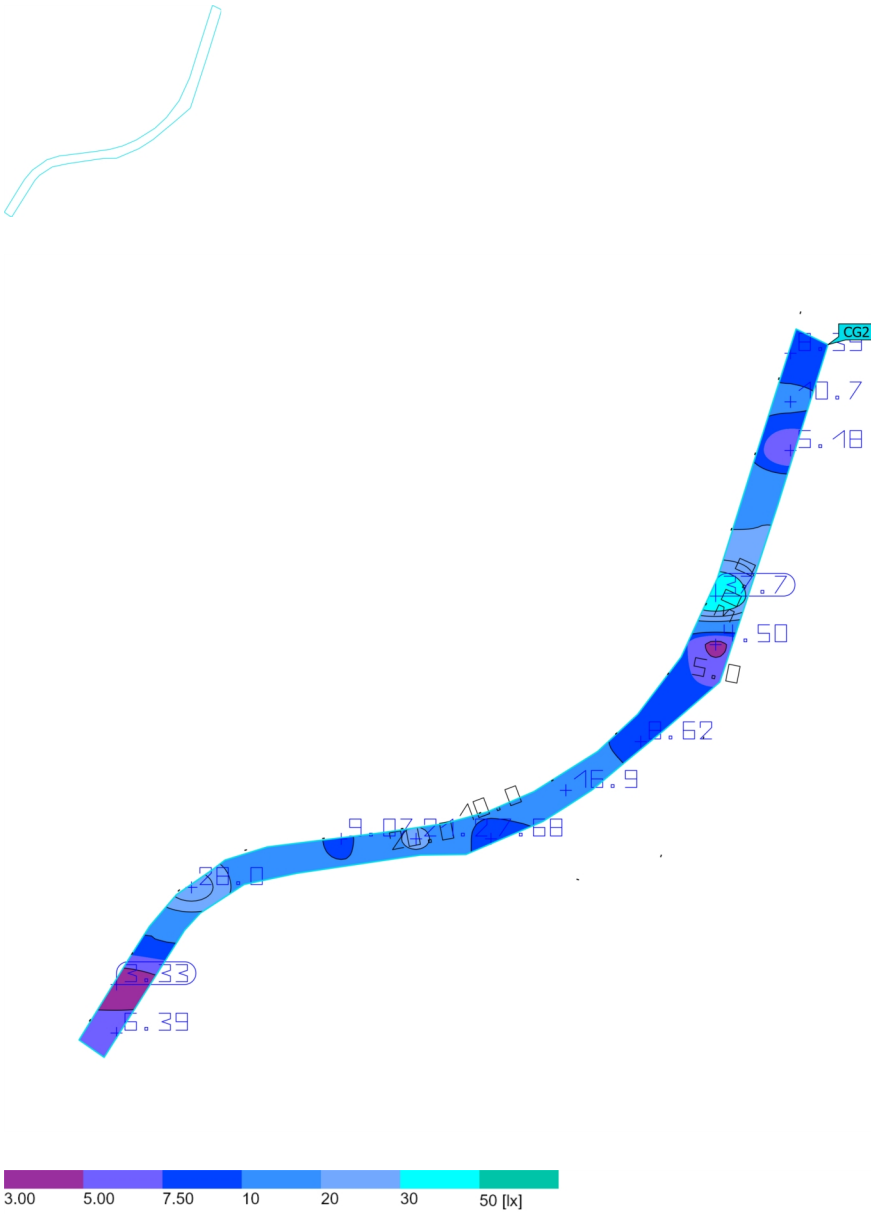


Properties	$\bar{E}$	$E_{min}$	$E_{max}$	$U_0 (g_1)$	$g_2$	Index
Takas Perpendicular illuminance Height: 0.000 m	11.8 lx	2.86 lx	37.7 lx	0.24	0.076	CG1

Utilisation profile: DIALux presetting (5.1.4-Standard (outdoor transportation area))

Site 1 (Light scene 1)

## Takas



Properties	$\bar{E}$	$E_{min}$	$E_{max}$	$U_0 (g_1)$	$g_2$	Index
Takas Perpendicular illuminance Height: 0.000 m	12.9 lx	3.33 lx	37.7 lx	0.26	0.088	CG2

Utilisation profile: DIALux presetting (5.1.4-Standard (outdoor transportation area))